

DECORATIVE GRILLES

Handcrafted in the heart of England, our decorative grilles bring an ornate elegance to cabinets, panels, doors, vents or radiator covers. Assembled by hand and precisely trimmed to fit your required aperture, our solid brass grilles are designed to showcase a perfectly symmetrical pattern. No matter your decor, discover the perfect style to complement your design concept.





Regency Diamond Grille in our satin brass finish with coarse mesh backing and Bromford Handle in our burnished brass finish

GRILLE FINISHES

Our expertly crafted luxury brass grilles come in ten beautiful finishes.

These can be applied to all brass grilles, however are not suited to stainless steel or aluminium.

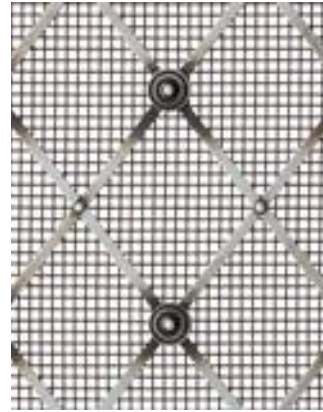
Please note, antique brass and bronze metal antique finishes can vary slightly from order to order as these are hand-finished. Antique brass, antique copper, bronze metal antique and antique silver are lacquered and it is not an option to have it removed.



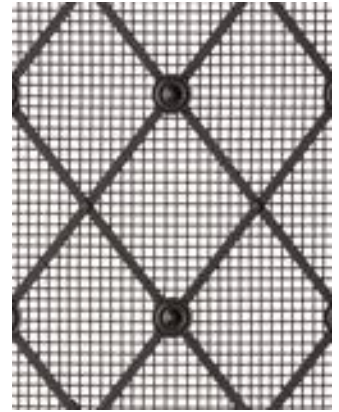
Antique brass lacquered



Antique copper lacquered



Antique silver lacquered



Bronzed metal antique
lacquered



Polished chrome plate



Polished nickel plate



Satin brass lacquered



Satin brass unlacquered



Satin chrome plate



Satin nickel plate

Maximum sizes for finishes, excluding brass and antique which can be larger, is 1829mm x 762mm



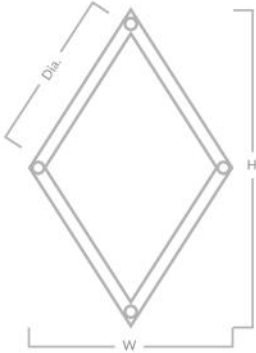
MIX Diamond Appliance Handle, Regency Diamond Grille and Edgbaston Pull in our satin brass unlacquered finish

REGENCY DIAMOND GRILLES

Handcrafted in solid brass, our Regency Diamond Grilles add an elegant touch to interiors. Featuring a perfectly symmetrical pattern assembled by hand and trimmed to fit your required aperture, your grille will come ready to fit.

DIAMOND OPTIONS

Available in three different diamond sizes, each made from a 3.2mm square section brass bar and fitted to hold with decorative pins.



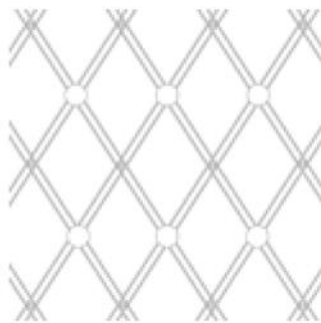
Code	Width (W)	Height (H)	Internal Diagonal Dia. (Dia.)
G200	33mm 1-5/16"	44mm 1-11/16"	25mm 1"
G201	51mm 2"	64mm 2-1/2"	38mm 1-1/2"
G202	70mm 2-3/4"	89mm 3-1/2"	54mm 2-1/8"

ROSETTE OPTIONS AND FORMATION

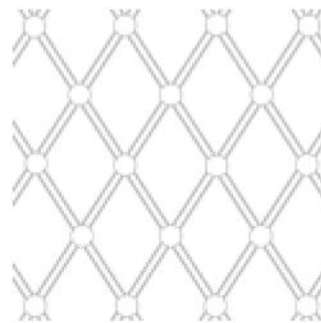
Available with the option of plain or floral rosettes on every crossover or alternating crossovers. They can also be supplied without rosettes, showing the pinheads only. An additional option of a mixed finish is available on request for some grilles.



No rosette



Alternate rosette



All rosette



Plain



Floral

MESH OPTIONS

Available with a number of mesh options, for more information, please see page 123.

METAL FRAME

Available with a metal frame, for more information please see page 122.

FINISH OPTIONS

To see our ten grille finishes in full, please turn to page 102.



Please turn to page 124 for details on how to order your grille



MIXED FINISH

- Grilles without rosettes can only be satin brass and satin brass lacquered but with a backing mesh in any other finish
- Grilles with alternate rosettes can be mixed with two finishes (excluding BMA). The grille is one finish and the mesh and rosettes a different finish
- Grilles with Rosettes on all joins cannot be offered in a mixed finish

CUT PINS

(The pins used to assemble the grilles are clipped at the back and hammered over to create a cleaner look)

- They are only offered when grilles have no mesh backing
- They cannot be offered on grilles with polished nickel, polished chrome or BMA

Please turn to page 124 for details on how to order your grille

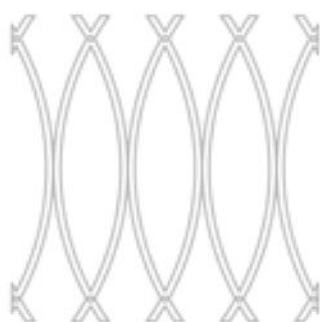
ELLIPTICAL GRILLES

Our Elliptical Pattern Grilles add a truly sophisticated look to cabinet doors, radiator covers and more. Handcrafted from solid brass and made to fit into your required aperture, they come ready to fit.

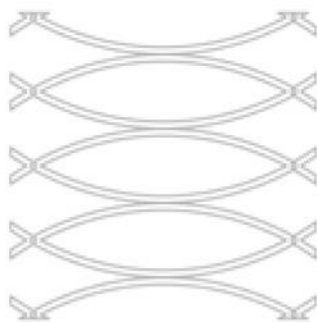
ORIENTATION OPTIONS

The ellipses will stretch to match either the height or width of your required measurements as indicated by the orientation below.

Please note, the longer measurement of your required panel needs to run in alignment with the stacked ellipses to achieve the desired look. For example, the height of the vertical grilles should be longer than the width



Horizontal

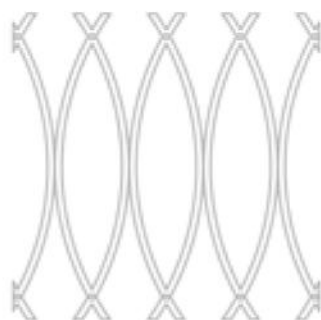


Vertical

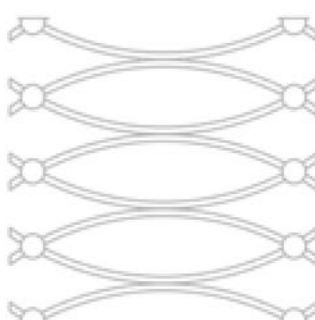


ROSETTE OPTIONS AND FORMATION

Available with the option of plain or floral rosettes on every crossover. They can also be supplied without rosettes, showing the pinheads only.



No rosette



All rosette



Plain



Floral

MESH OPTIONS

Available with a number of mesh options, for more information, please see page 123.

METAL FRAME

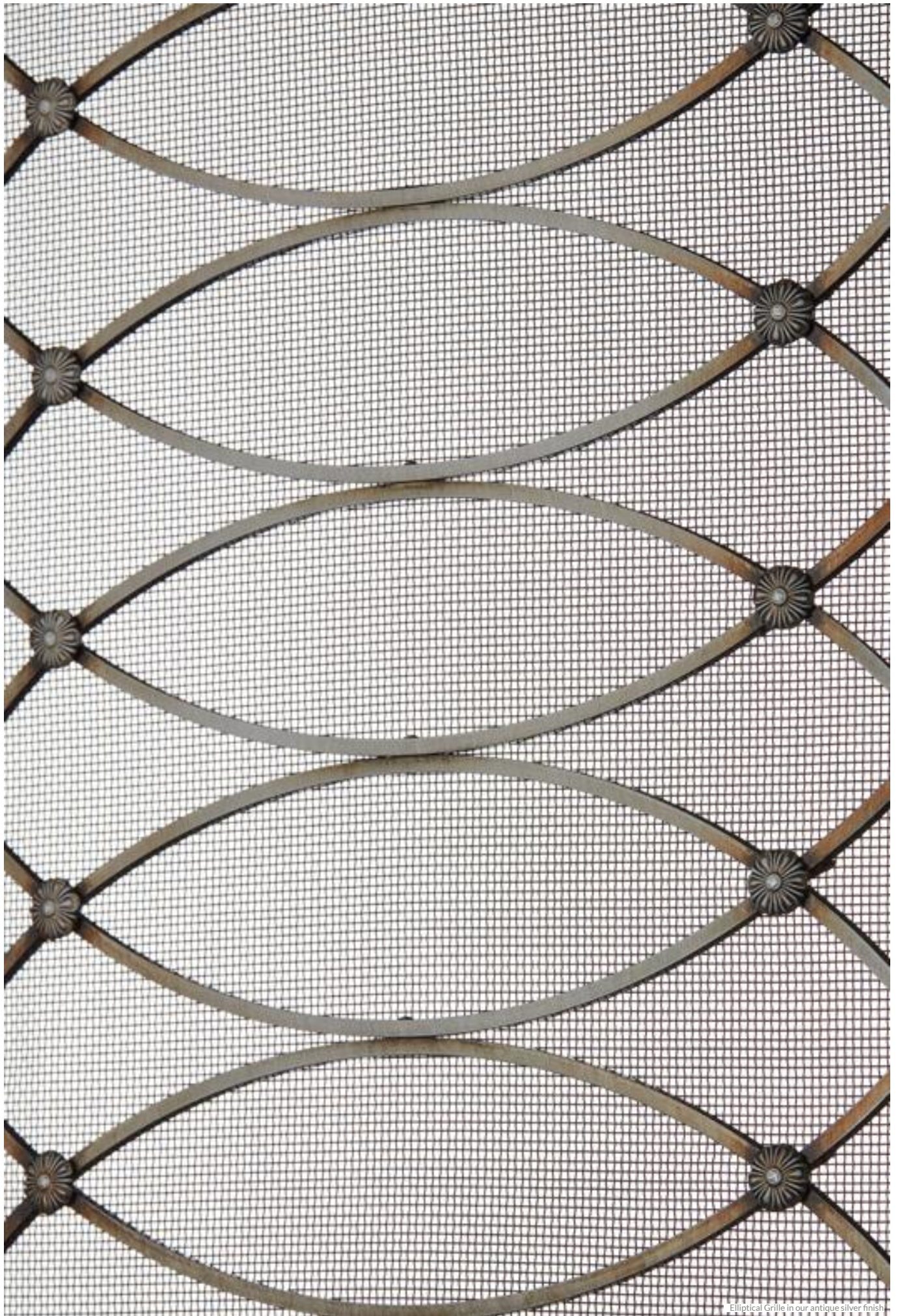
Available with a metal frame, for more information please see page 122.

FINISH OPTIONS

To see our ten grille finishes in full, please turn to page 102.



Please turn to page 124 for details on how to order your grille



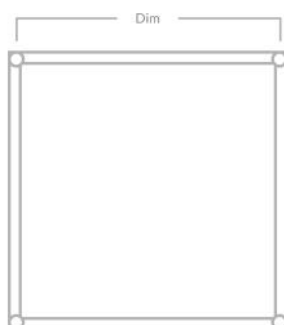
Elliptical Grille in our antique silver finish

GEORGIAN SQUARE GRILLES

Our Georgian Square Grilles add a touch of finesse to panels, doors, vents and more. Handcrafted from solid brass and made to fit into your required aperture, they come ready to install.

SQUARE OPTIONS

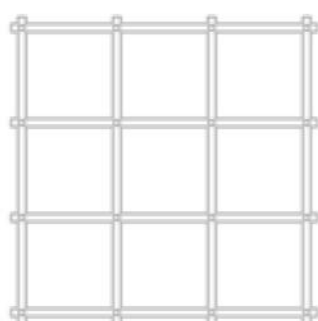
Available in three different square sizes, each made from a 3.2mm square section brass bar and fitted to hold with decorative pins.



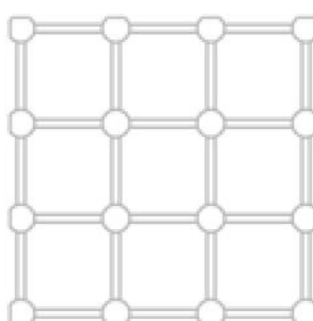
Code	Dimensions (Dim)
G300	25mm 1"
G301	38mm 1 1/2"
G302	54mm 2 1/8"

ROSETTE OPTIONS AND FORMATION

Available with the option of plain or floral rosettes on every crossover. They can also be supplied without rosettes, showing the pinheads only.



No rosette



All rosette



Plain



Floral

MESH OPTIONS

Available with a number of mesh options, for more information, please see page 123.

METAL FRAME

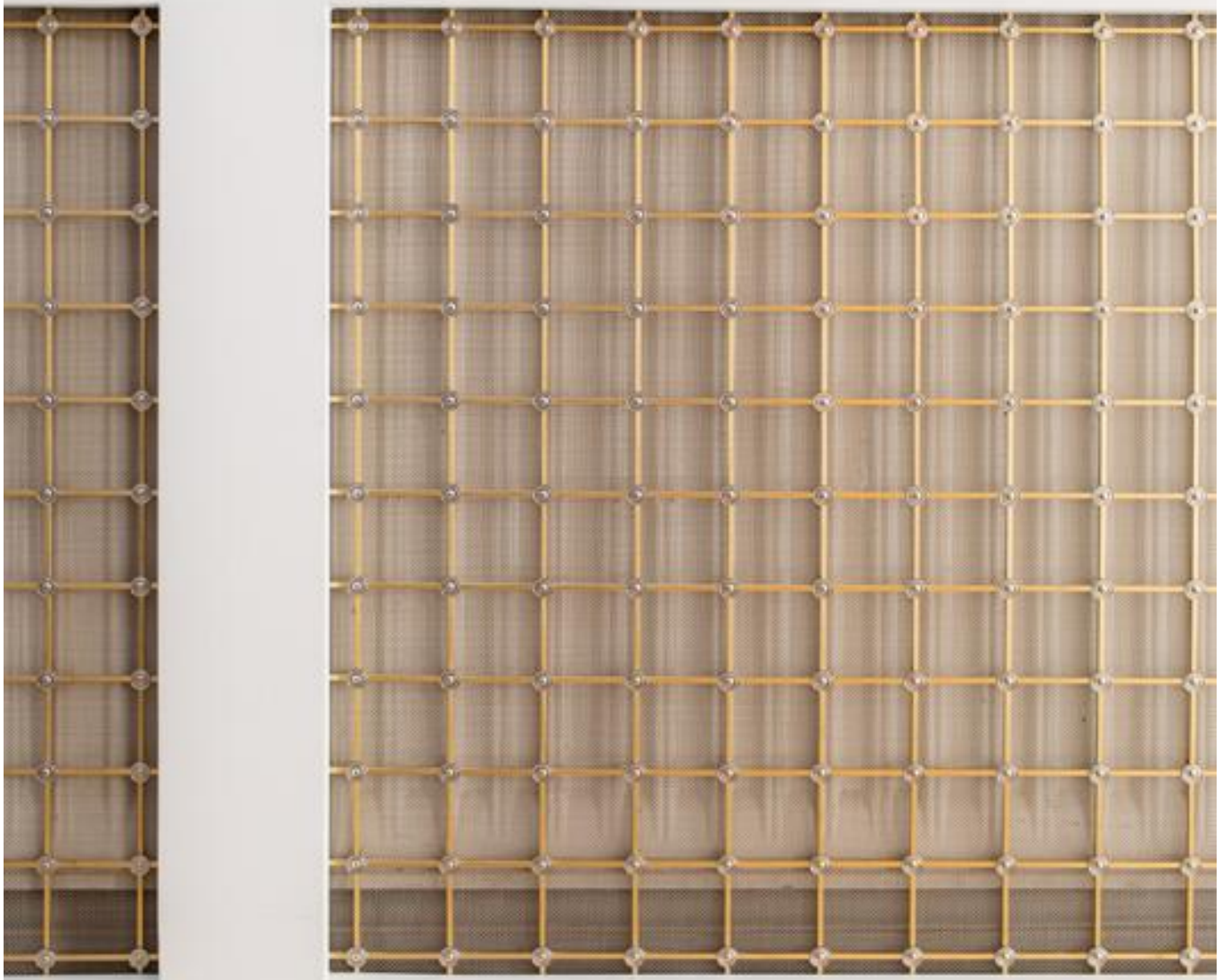
Available with a metal frame, for more information please see page 122.

FINISH OPTIONS

To see our ten grille finishes in full, please turn to page 102.



Please turn to page 124 for details on how to order your grille



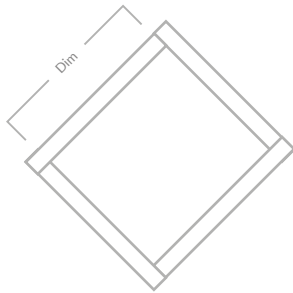
Georgian Square Grille in our satin brass finish with polished nickel plain rosettes

DIAMOND INTERWOVEN GRILLES

A basket weave style, our hand-woven Diamond Interwoven Grille is available in a number of different apertures and section size configurations and is supplied in a diamond layout with either plain or reeded style sections.

DIAMOND OPTIONS

Available in four different diamond sizes.



Dimensions (Dim)
10mm 3/8"
13mm 1/2"
19mm 3/4"
25mm 1"

PLAIN OR REEDED WIRE

Interwoven grilles are available in both plain and reeded wires with an option of 3mm & 5mm wire width. 3mm wire is not available with 25mm diamond sizes



Plain wire



Reeded wire

MESH OPTIONS

Available with a number of mesh options, for more information, please see page 123.

METAL FRAME

Available with a metal frame, for more information please see page 122.

FINISH OPTIONS

To see our ten grille finishes in full, please turn to page 102.



Please turn to page 124 for details on how to order your grille



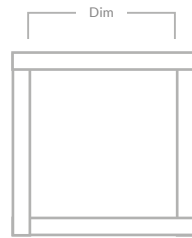
Diamond Interwoven Grille in our antique brass lacquered finish

SQUARE INTERWOVEN GRILLES

A basket weave style, our hand-woven Square Interwoven Grille is available in a number of different apertures and section size configurations and is supplied in a square layout with either plain or reeded style sections.

SQUARE OPTIONS

Available in four different square sizes.



Dimensions (Dim)
10mm 3/8"
13mm 1/2"
19mm 3/4"
25mm 1"

PLAIN OR REEDED WIRE

Interwoven grilles are available in both plain and reeded wires with an option of 3mm & 5mm wire width. 3mm wire is not available with 25mm square sizes.



Plain wire



Reeded wire

MESH OPTIONS

Available with a number of mesh options, for more information, please see page 123.

METAL FRAME

Available with a metal frame, for more information please see page 122.

FINISH OPTIONS

To see our ten grille finishes in full, please turn to page 102.



Please turn to page 124 for details on how to order your grille



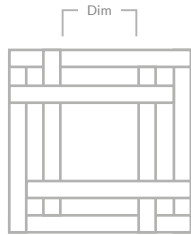
Square Interwoven Grille in our polished nickel finish and Cotswold Cupboard Latch & Queslett Pull in our polished nickel finish

DOUBLE SQUARE INTERWOVEN GRILLES

A basket weave style, our hand-woven Double Square Interwoven Grille is available in a number of different apertures and section size configurations and is supplied in a square layout with either plain or reeded style sections.

SQUARE OPTIONS

Available in three different square sizes.



Code	Dimensions (Dim)
G656	13mm 1/2"
G656	19mm 3/4"
G656	25mm 1"

PLAIN OR REEDED WIRE

Double interwoven grilles are available in both plain and reeded wires with a 3mm wire width.



Plain wire



Reeded wire

MESH OPTIONS

Available with a number of mesh options, for more information, please see page 123.

METAL FRAME

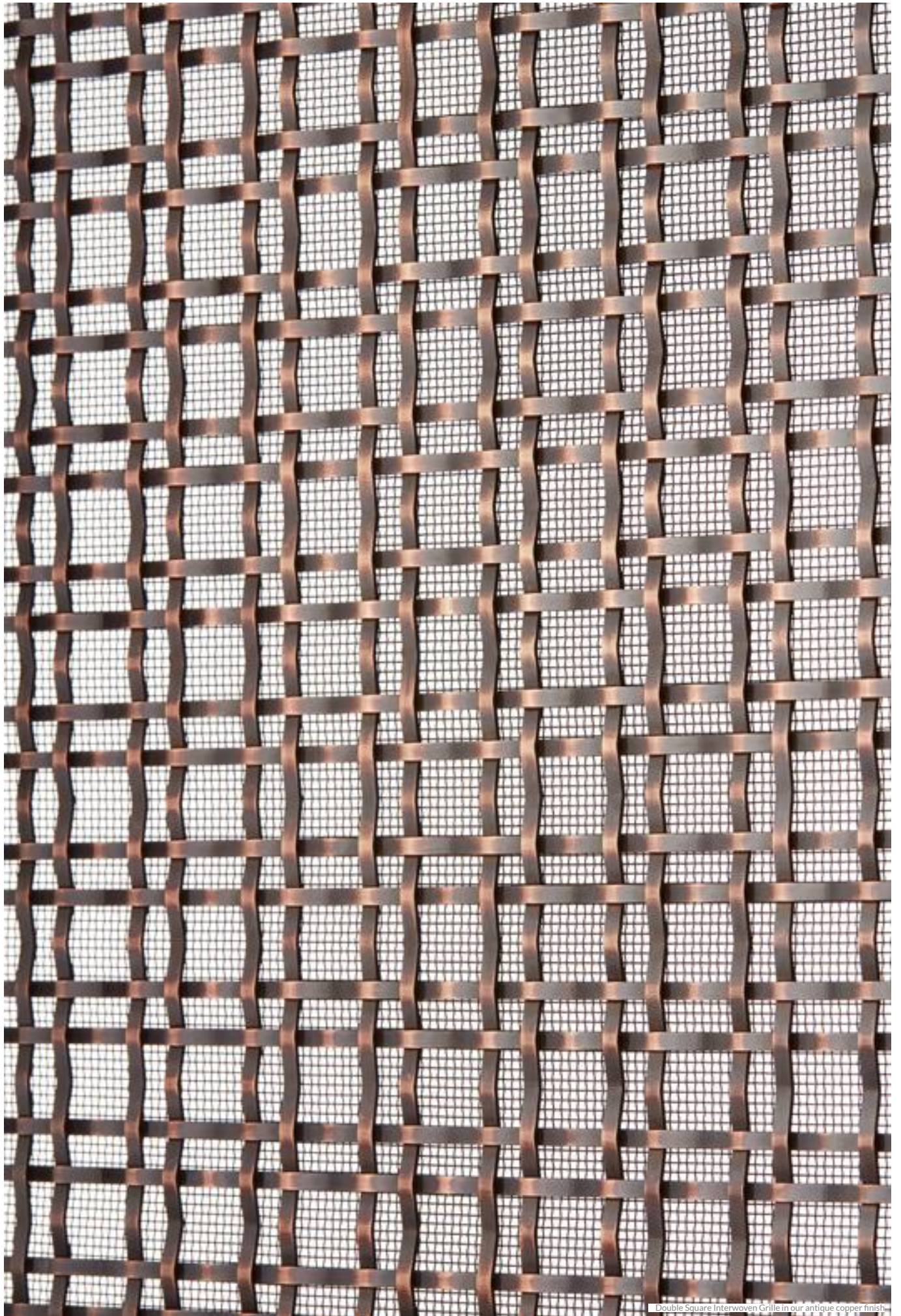
Available with a metal frame, for more information please see page 122.

FINISH OPTIONS

To see our ten grille finishes in full, please turn to page 102.



Please turn to page 124 for details on how to order your grille



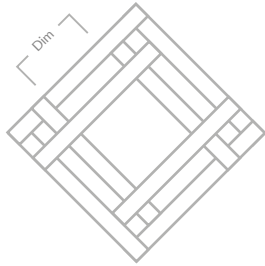
Double Square Interwoven Grille in our antique copper finish

DOUBLE DIAMOND INTERWOVEN GRILLES

A basket weave style, our hand-woven Double Diamond Interwoven Grille is available in a number of different apertures and section size configurations and is supplied in a diamond layout with either plain or reeded style sections.

DIAMOND OPTIONS

Available in three different diamond sizes.



Code	Dimensions (Dim)
G656	13mm 1/2"
G656	19mm 3/4"
G656	25mm 1"

PLAIN OR REEDED WIRE

Double interwoven grilles are available in both plain and reeded wires with a 3mm wire width.



Plain wire



Reeded wire

MESH OPTIONS

Available with a number of mesh options, for more information, please see page 123.

METAL FRAME

Available with a metal frame, for more information please see page 122.

FINISH OPTIONS

To see our ten grille finishes in full, please turn to page 102.



Please turn to page 124 for details on how to order your grille



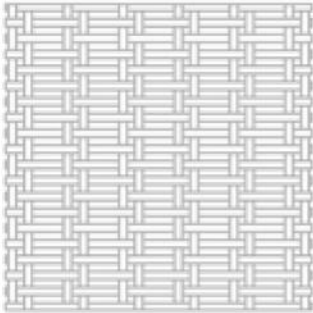
Double Diamond Interwoven Grille in our antique brass lacquered finish and our Bournville Cabinet Handle in our burnished brass finish

DOUBLE RECTANGULAR INTERWOVEN GRILLES

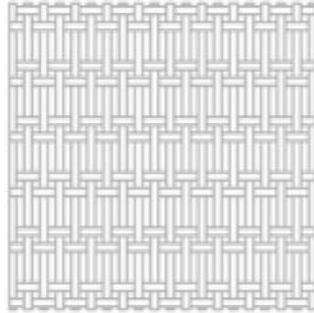
A basket weave style, our hand-woven Double Rectangular Interwoven Grille is available in two orientations and is supplied in a rectangular layout with either reeded or plain style sections.

ORIENTATION OPTIONS

Available in horizontal or vertical style.



Horizontal



Vertical

Code	Dimensions
G657	13mm x 3mm 1/2" x 3/16"

PLAIN OR REEDED WIRE

Double interwoven grilles are available in both plain and reeded wires with a 3mm wire width.



Plain wire



Reeded wire

MESH OPTIONS

Available with a number of mesh options, for more information, please see page 123.

METAL FRAME

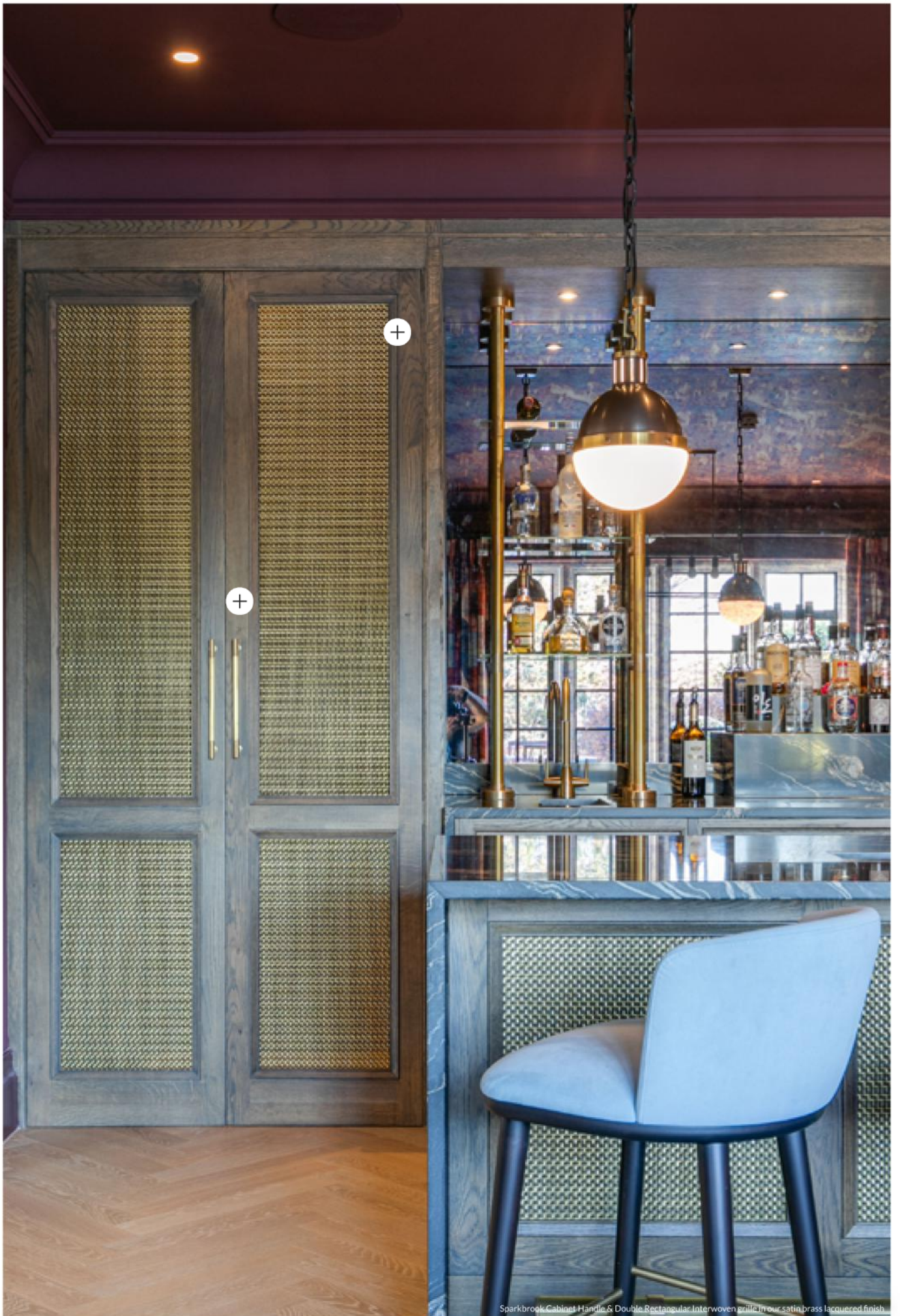
Available with a metal frame, for more information please see page 122.

FINISH OPTIONS

To see our ten grille finishes in full, please turn to page 102.



Please turn to page 124 for details on how to order your grille



Sparkbrook Cabinet Handle & Double Rectangular Interwoven grille in our satin brass lacquered finish

PERFORATED SHEET GRILLES

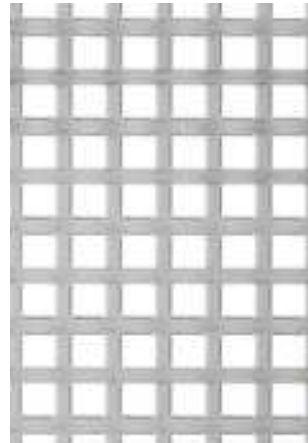
Our decorative perforated sheet grilles are used in kitchens as radiator covers or on interior doors.



G204 Large Cross
23mm point to point



G206 Interlocking Circle
34.9mm circle diameter



G811 Square Brass
6.3mm internal square



G205 - Small Club
6mm max width



G208 Small Cross
15mm point to point



G223 Large Club
19mm max width



G810 Diamond
9.5mm internal square



G207 Hexagonal
internal lozenge
19mm high x 9.5mm wide

SPECIFICATIONS

- Available in standard full sheets, 2m x 1m
- Each perforated sheet measures at 2000mm x 1000mm as the sheets have a small border, the patterned area of the sheet measures at 1970mm x 970mm
- Sheet thickness is 0.8mm
- Also available in Aluminium, self-colour only

METAL FRAME

Available with a metal frame, for more information please see page 122.

FINISH OPTIONS

To see our ten grille finishes in full, please turn to page 102.



Please turn to page 124 for details on how to order your grille

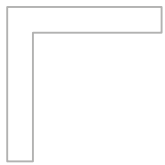


Hexagonal Grille in our polished brass lacquered finish and Bakes Cabinet Handle in our satin antique satin lacquered finish

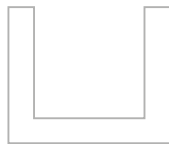


METAL FRAMES

All of the grilles featured in our catalogue can be supplied with an added metal frame.
We offer four frame options; Angle, Channel, Flat and T section.



Angle Section



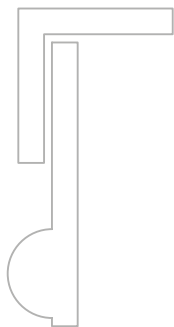
Channel Section



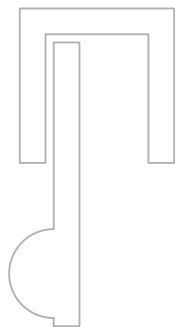
Flat Section



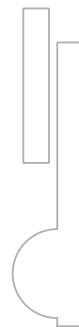
T Section



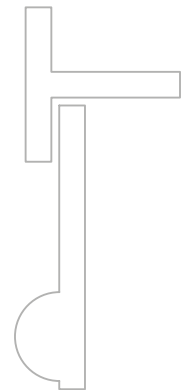
Angle Section
attached to grille (side view)



Channel Section
attached to grille (side view)



Flat Section
attached to grille (side view)



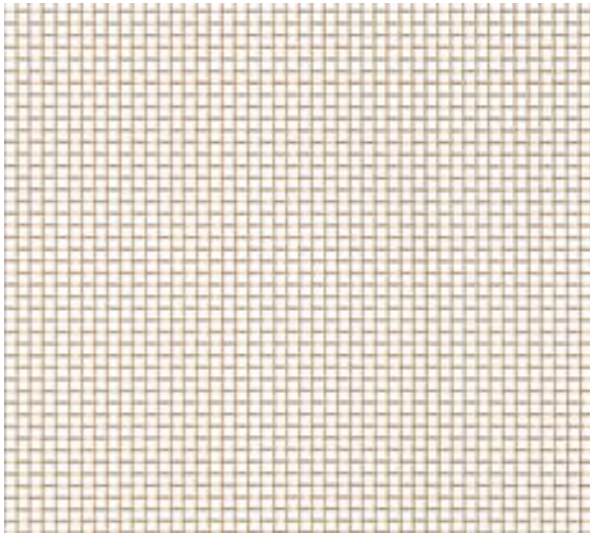
T Section
attached to grille (side view)

ADDITIONAL INFORMATION

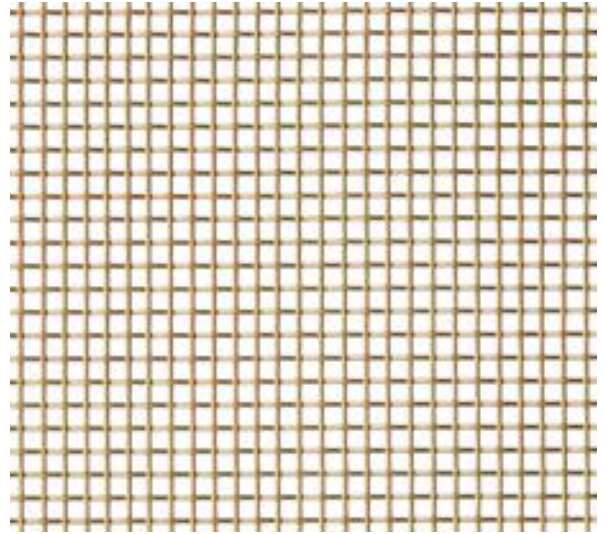
- All can be supplied in either a 12.7mm, 19.1mm or 25.4mm face width
- Frames are made from solid brass 3.2mm thick section and can be finished to match the grille required
- Screw holes can be added to the face of the frame for fixing if required

MESH

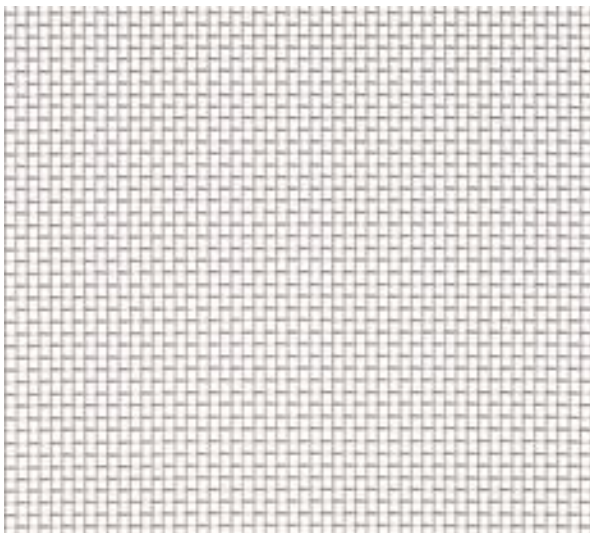
Our mesh is used with many of our other grilles as a backing but it can also be applied alone when something simple is required.



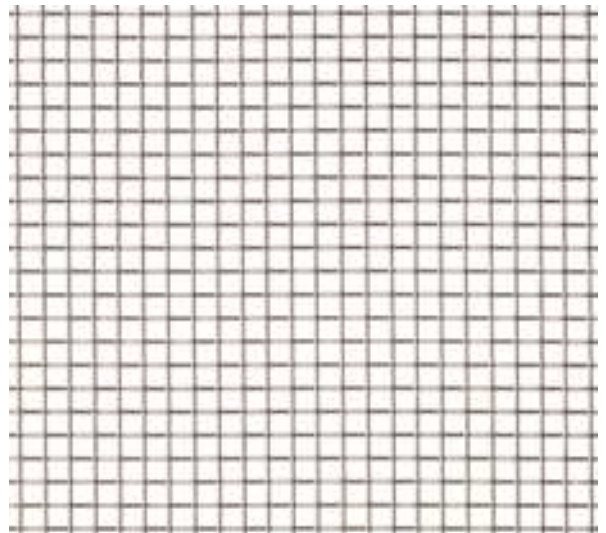
G213 - Fine Mesh Brass
Square Holes 1mm Internal
Mesh is 0.65mm thick



G214 - Coarse Mesh Brass
Square Holes 3mm Internal
Mesh is 1.3mm thick



G213 - Fine Mesh Stainless Steel
Square Holes 1mm Internal
Mesh is 0.65mm thick



G214 - Coarse Mesh Stainless Steel
Square Holes 3mm Internal
Mesh is 1.3mm thick

ADDITIONAL INFORMATION

- Both available cut to size and also on a roll 1200mm high (approx. 4ft)
- Both available in Brass and Stainless Steel
- Finishes available on Brass material only

FINISH OPTIONS

To see our ten grille finishes in full, please turn to page 102.



HOW TO ORDER YOUR GRILLE

To place an order for a decorative grille, please email sales@armacmatin.co.uk with your enquiry.

Use the guide below to help provide as much information as possible.

REQUIRED FOR ALL GRILLES

- Supply and identify the height and width of your panel. This should be the actual size you require, including the rebate of your door. Please allow 1.6mm all around to allow the grille to fit in your rebate comfortably
- Note the finish required
- Note if you require a metal frame

ADDITIONAL DETAILS

Regency Diamond and Georgian Square

- Advise if backing mesh is required and specify G213 or G214 (see page 123)
- Advise if rosettes are required and if on every intersection or on alternate intersections
- Advise if you require roses, pinheads or both and the type of rosette required

Elliptical grilles

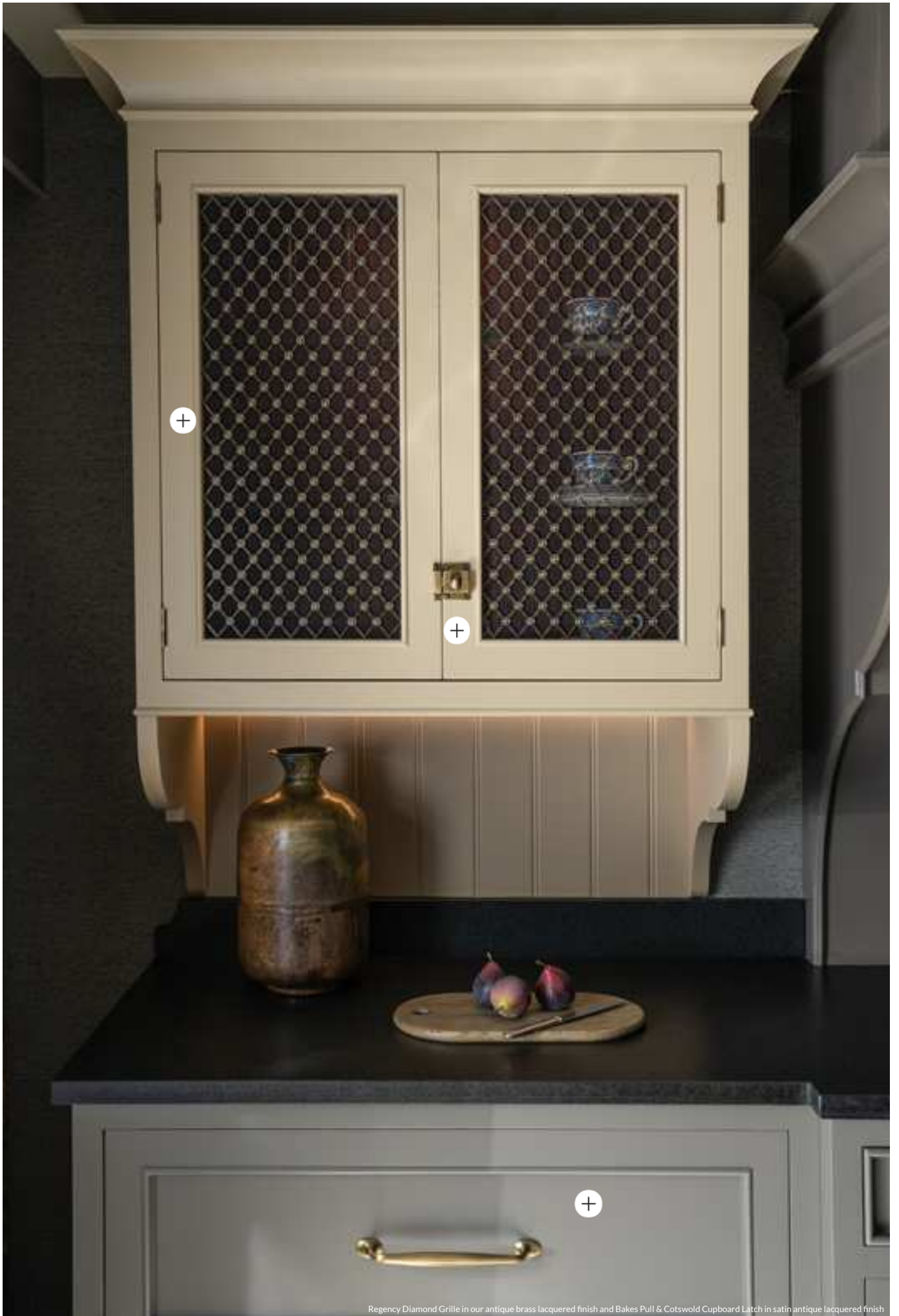
- Note which way you require the ellipses to run - horizontally or vertically (as pictured on page 106)
- Advise if backing mesh is required and specify G213 or G214 (see page 123)
- Advise if rosettes are required and if so which style

Interwoven grilles

- Note if you require a diamond, square or rectangular pattern
- Note the aperture size required
- Note if you'd like plain or reeded section and the size required
- Advise if backing mesh is required and specify G213 or G214 (see page 123)

Frames

- Note the type and size of frame required
- Supply the aperture (hole size) or overall size (including frame)
- Advise if screw holes are required in the frame for fixing



Regency Diamond Grille in our antique brass lacquered finish and Bakes Pull & Cotswold Cupboard Latch in satin antique lacquered finish